

FOR ASSESSMENT AND TAXATION ONLY, NOT SUITABLE FOR
LEGAL, ENGINEERING, OR SURVEY PURPOSES

S.W. 1/4 S.E. 1/4 SEC. 13 T.5S. R. 11W. W.M.
Tillamook County
1" = 100'



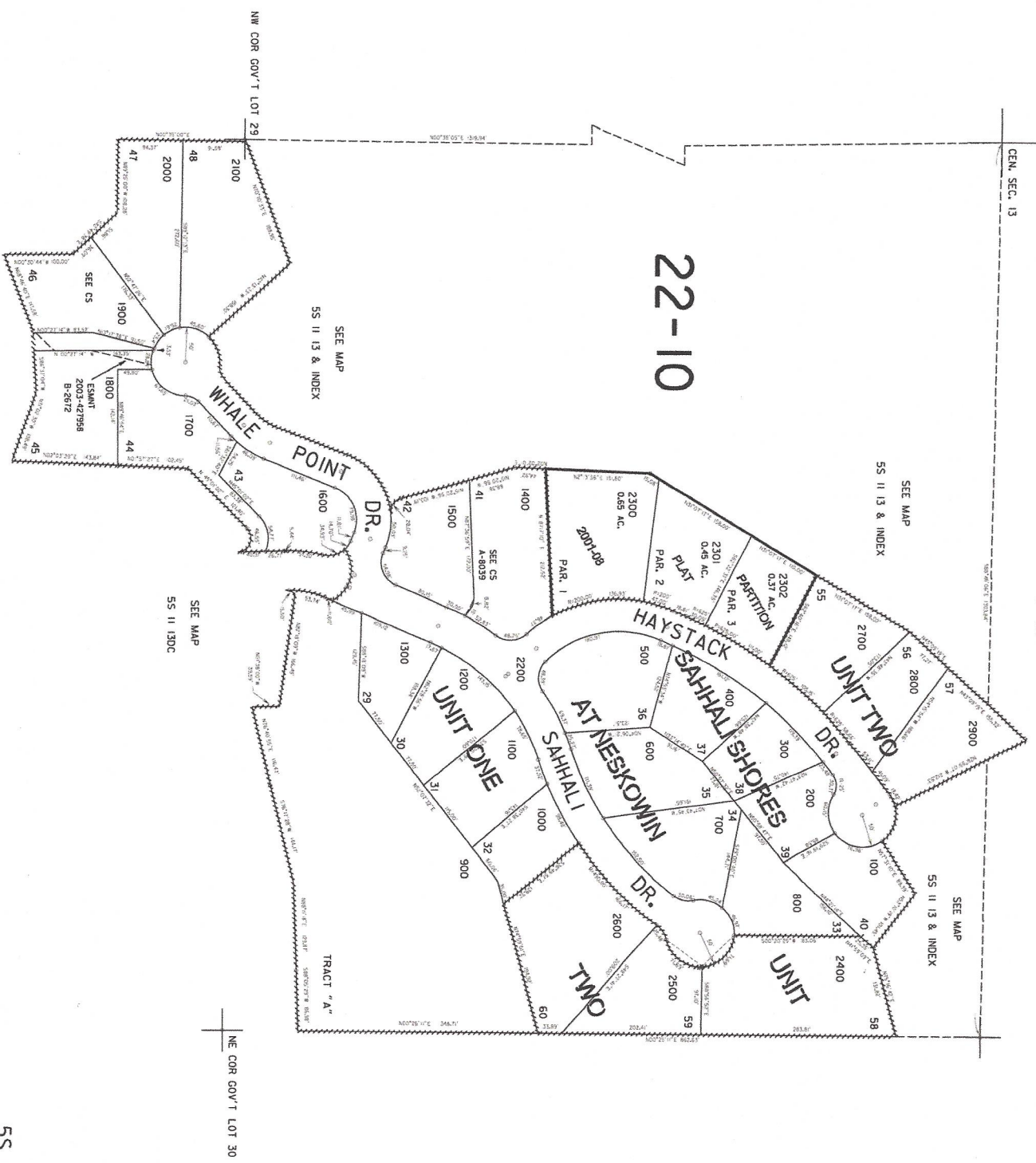
05S11W13DC
SAHHALI SHORES
CANCELLED

SAHHALI SHORES
05S11W13DC
REVISED 03/09/12, VAS

THIS MAP WAS PREPARED FOR ASSESSMENT PURPOSE ONLY

NW1/4 SE1/4 SEC.13 T.5S. R.11W. W.M.
TILLAMOOK COUNTY
1" = 100'

5S 11 13DB
SAHHALI SHORES



5S 11 13DB
SAHHALI SHORES
REVISED 01/20/06, WS